

Allenton School Culture Expectation of Students



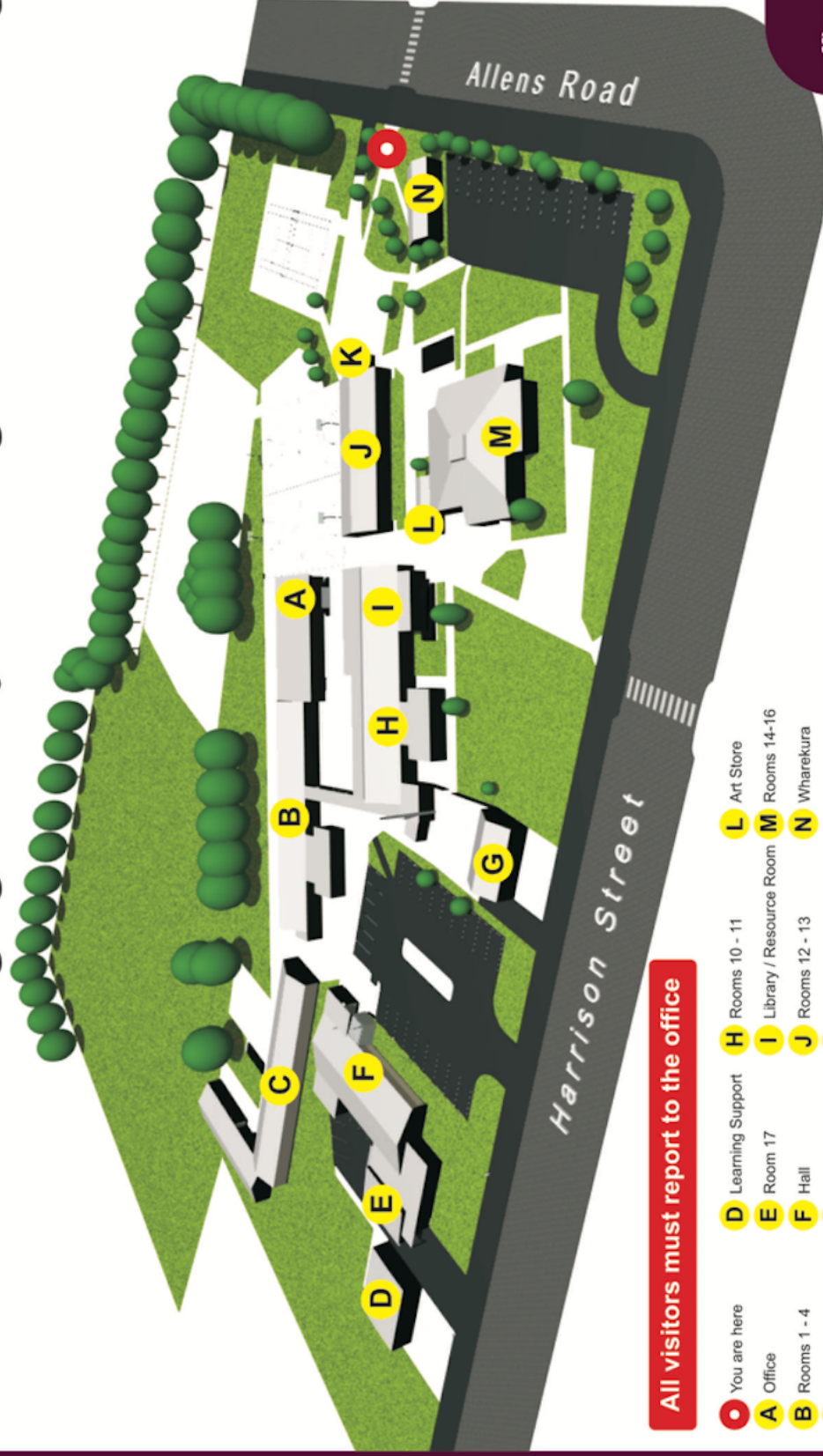
Allenton School and its community will grow and maintain the knowledge, skills and attitudes that equip our children to become successful citizens in a diverse world.



Allenton School

Me akotahi hei oranga mō te katoa
Together we learn and grow

Aroha **Self-managing** **Always thinking** **Communicating** **Effort**



Notes

- All visitors must report to the office**
- You are here
 - A** Office
 - B** Rooms 1 - 4
 - C** Rooms 5 - 9
 - D** Learning Support
 - E** Room 17
 - F** Hall
 - G** Caretaker
 - H** Rooms 10 - 11
 - I** Library / Resource Room
 - J** Rooms 12 - 13
 - K** P.E. Store
 - L** Art Store
 - M** Rooms 14-16
 - N** Wharekura

(03) 308 6495
office@allenton.school.nz
www.allenton.school.nz



Allenton School :



Aroha

- I respect myself and others.
- I am kind and caring.
- I look after all that is around me.

Self-managing

- I organise myself.
- I can problem solve.
- I follow the rules.

Always thinking

- I achieve personal goals.
- I am curious and creative.
- I am a learner.

Communicating

- I listen and speak to others.
- I give and receive ideas.
- I use technology.

Effort

- I do my best.
- I am focussed.
- I persevere.

Together we learn and grow
Me akotahi hei oranga mō te katoa

Wheel of Choice

If you have a problem, try 2 of these ideas.
If you still have a problem, get a teacher.



Stop, think and do the right thing.

Wheel of choice questions - Avoid questions that start with WHY? Consider offering limited choices, especially to young children. Always start with "What do you think should happen?"

Stop it. I don't like it.

- How do you feel?
- How can you let X know how you feel?
- Make an 'I' statement.

Choose someone else to play with.

- Who else could you play with?
- How will you ask them to play with you?

Find a quiet place to relax.

- Where can you go to feel safe and calm?
- What will you do when you get there?
- Who will you be there with?
- How long do you think you need to stay there?

Choose somewhere else to play.

- Where else do you enjoy playing?
- What will you do when you get there?
- Who would you like to go with you?

Ask a peer mediator.

- Where will you go to find one?
- When you get there what will you say and do?

Compromise.

- How can we solve this problem?
- How can we be kind to each other?
- How can we help each other?
- How can we share?

Sorry.

- How do you think X feels?
- How would you feel if it were you?
- How can we help them feel better?
- What can we say and do?

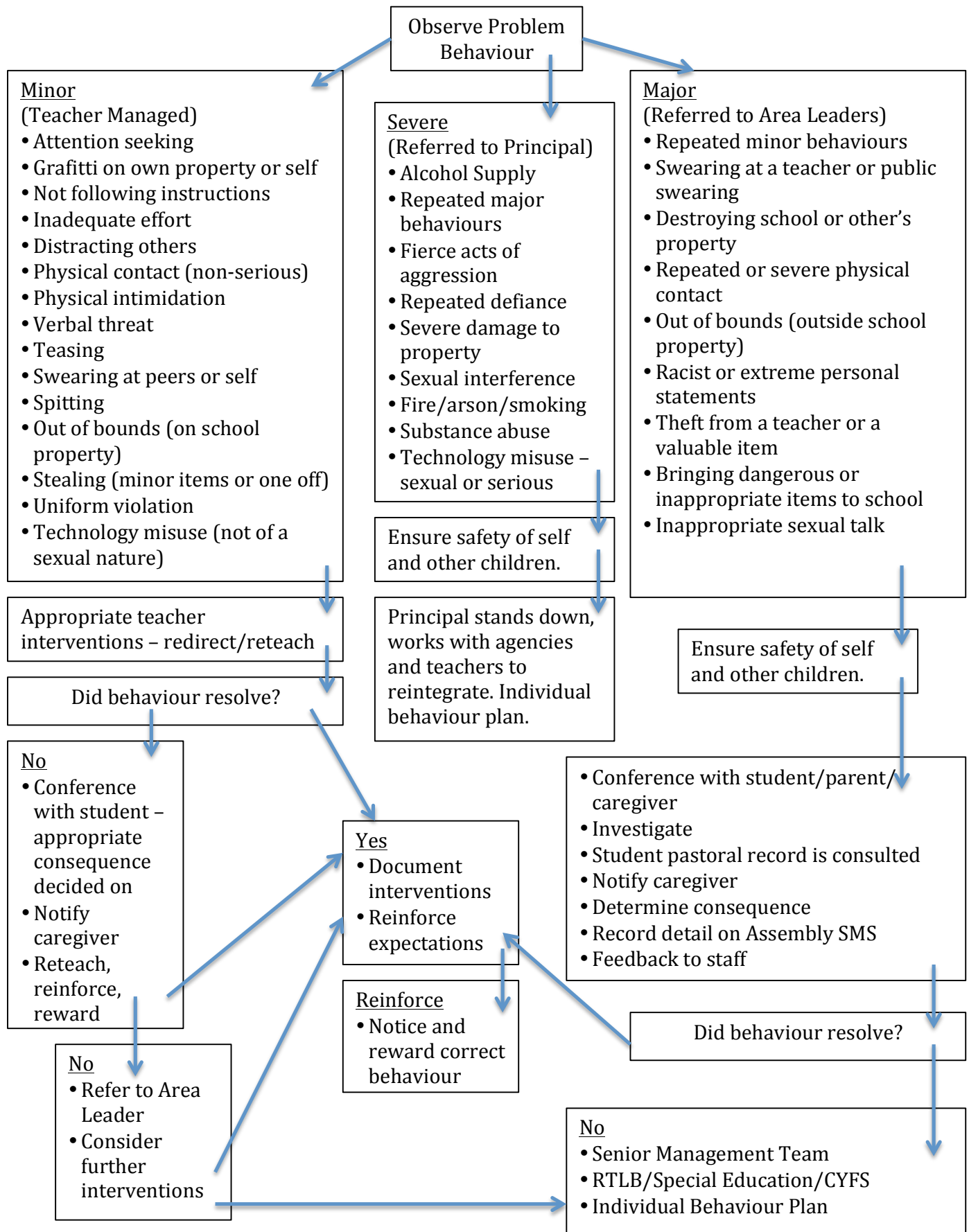
MYOB.

- How are you helping the situation?
- Are you telling me this to get X into trouble or out of trouble?
- Has this happened to you?

Keep calm and walk away.

- How are you feeling?
- Do you want to tell me what happened?
- What would happen if you chose to walk away?

ALLENTON SCHOOL BEHAVIOUR MANAGEMENT PROCEDURE FLOW CHART



* There are exceptions when a student's behaviour is part of a severe learning condition, eg. Autism.

Allenton School Culture Lesson Plan

Setting: Entering & Exiting School		
Expected Behaviour	Aroha	Looking after your brothers and sisters Families have pre-arranged areas to meet and children to stay there Holding the gates open for others
	Self-managing	Make sure that you are wearing the correct uniform especially wearing shoes to and from school Make sure you have all your belongings and carry them appropriately. Use the correct entrances No scootering or biking on school grounds use bike & scooter stand beside tennis court. Use the patrolled crossroads Walk on the footpath Wait till vehicles come to a stop before getting out 8:30am bell children to wait on library steps Bus children to wear vests for coming and going on bus Children to go straight to Hit Play Children are to return to the office if parents haven't collected them.
	Always thinking	Think about what are the appropriate entrances to use eg not through car park Don't hop into someone else's car
	Communication	Use the Stop, Look and Listen Rules Listen to the Road Patrol Children Office to let teachers know if plans for where families meet change. Remind families that dogs are not allowed in school grounds and if tied to school fences it must be away from the entrances.
	Effort	Watch what is going on around you Walk quickly and safely over the crossings
Values - Respect, Co-operation, Honesty, Curiosity, Excellence		

Teach	Tell	No scootering or biking in the school grounds Use manners and hold gates open for people Tell children to use scooter & bike stand by the tennis court.
	Show	Show the correct entrances into the school Show children where to wait before the 8:30am bell. Show children where they can put their scooters/bikes and how to safely get there.
	Practice	How to use the crossings correctly What the Road Patrol children say and do

Monitor	Pre-correct Remind	Remind children before they head home what the expectations are for them entering and exiting the school.
	Supervise	Teachers to monitor, encourage and reinforce expected behaviours. Teachers to observe and check children are entering and exiting school correctly
	Feedback	Use Yahoo's for children displaying correct behaviours
Re-teach		Monitor own class and reteach as appropriate.
Evaluation		



House Points

- House points to be rewarded in groups of 10 with 10 being the minimum and 50 being the highest and you can give out any group of 10 in between depending on how deserving the children's accomplishment was.
- Things children can collect points for are picking up rubbish without being asked, looking after the school environment, returning PE equipment that they may have found, helping friends who have been hurt, outstanding school work, points on school certificates, doing anything that is outstanding and show the qualities of an Allenton School ACE.
- Remember 50 house points goes to the child that shows an outstanding achievement or deserves that special recognition for whatever they have done.
- Only children working in the PE shed are allowed to give out House Points and that is only for children returning lost PE gear or lining up appropriately.
- House points will be collected at the end of the week from each class and added up to get a school total. Teachers to add these up on a Thursday. The winning House will be announced on the notices the next week & results displayed in the library.
- The winning house each week will get extra play. The activities will be arranged by the House Leaders in consultation with the Staff Leader of their house. This will occur on a Wednesday straight after morning tea or at the next convenient date for the Staff House Leader who will supervise the activity time.

Yahoo's

- Yahoo awards are worth 10 points each.
- Staff award Yahoo awards when they see children exhibiting the kind of behaviour we would expect of an Allenton School ACE. This could be picking up rubbish, helping friends/other children in the playground, playing a game where they are cooperating nicely with each other etc
- Children need to be told explicitly why they have been given the Yahoo award so that they can circle the disposition/quality that they demonstrated out in the playground.
- Children fill in Yahoo award then put it in their syndicate area box which is located in the office.
- Peer mediators are the only children who can also hand out Yahoo awards
- Each week the Yahoo awards are counted up by the House Leaders and the houses awarded the total house points from the number of Yahoo's in the boxes eg 1 Yahoo = 10 house points. 2 Yahoo awards are pulled out of the boxes from each syndicate area and those children's names are announced on the notices at the beginning of the new week and then the children are allowed to choose a reward from the Treasure Box in Miss Tayles' Room (Room 15).
- All staff have their own personal copy of the Yahoo awards with their name on the bottom. It is each staff members responsibility to make sure that they copy their own supply.